

Lizz Wright
Saturday, July 24, 7:00 pm
rain or shine
GERLACH OUTDOOR THEATER

Southern singer-songwriter Lizz Wright crafts a distinct mixture of jazz, folk, gospel, and R&B, and is widely celebrated as a rising star. The warmth and resonance of her gospel-trained contralto is matched only by her versatile, deeply expressive style.

The Orchard, Wright's most recent CD release, reflects her lifelong musical journey. The artist was born in the small rural town of Hahira, Georgia, one of three children of a minister father and a mother who sang gospel at church services. In her childhood, she began playing piano and singing in church with her two siblings. In high school, she broadened her musical horizons by studying choral singing, performing with groups of various sizes and winning several regional and national awards.


Wright subsequently studied voice at Georgia State University in Atlanta, and continued her musical education at New York's New School and in Vancouver. Returning to Atlanta, she won considerable regional acclaim after joining the jazz group *In the Spirit*. In 2002, Wright gained high-profile acclaim for her performances as part of a touring Billie Holiday tribute, for which she was singled out as a future star by several prominent critics.

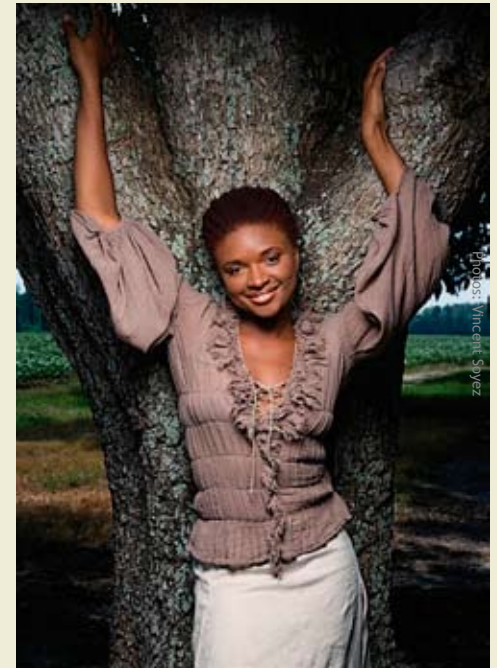
The New York Times says, "...she stands in a direct line of descent from Odetta through Tracy Chapman, singers whose source of sustenance is the African-American spiritual tradition."

Delicious food and beverages are available for purchase from Haute Taco, North Star American Bistro, Loaf & Jug, and Bella Caffe. No pets. No carry-ins allowed. No smoking. Rain or shine. Gates open at 5:30 pm.

Tickets: \$40 Premium / \$15 Lawn
(262) 781-9520 • wilson-center.com

Presented by  **UBS**

with support from  **we energies**



Ploch Art Gallery
Free and open to the public
Monday–Saturday,
9:00 am–5:00 pm

The Wilson Center's Ploch Art Gallery features five art exhibitions annually showcasing the work of living Wisconsin artists. Exhibits and receptions bring together artists and visitors from across the region with the goal of increasing appreciation, awareness, and participation in the arts.

Emily Belknap
September–October 2010 • sculpture

Emily Belknap uses large stone sculpture to create a sense of time and describe its impact on nature. By focusing on simple patterns and movements, Emily reminds us of how fragile a moment can be.

Joann Engelhart
November–December 2010 • mixed media

Joann Engelhart's mixed media pieces combine textile, print, and found organic materials. Joann presents us with a balanced, harmonious, and artistic use of nature.

Yevgeniya Kaganovich
January–February 2011 • mixed media installation

Yevgeniya Kaganovich uses sculptural objects and installations to make a statement about culture and experience. Her works are visually interesting and also complex and skillful, using metal, latex, nylon, rubber, and many other materials. This exhibition will be created specifically for the Ploch Art Gallery.

Rodger Bechtold
March–April 2011 • painting

Rodger Bechtold's colorful and vibrant oil paintings give the viewer a transformative vision of landscapes. Bechtold's works provide us with rich interpretations of the Midwest as well as a raw sense of painting and color.

League of Milwaukee Artists
June–July 2011 • juried exhibition

The League of Milwaukee Artists represents 150 Milwaukee area artists and has been an active organization for more than 60 years. The subjects and styles of artwork are wide ranging and represent the diversity to be found in Milwaukee.

Presented by  **LYLE HUSAR**
DESIGNS
FINE DIAMONDS & JEWELRY



Wet Land by Emily Belknap, (mixed media installation).